

### PŘÍZEMÍ

|    |                    |                     |
|----|--------------------|---------------------|
| 01 | zádveř             | 6,1 m <sup>2</sup>  |
| 02 | technická místnost | 2,9 m <sup>2</sup>  |
| 03 | hala               | 10,9 m <sup>2</sup> |
| 04 | obývací pokoj + kk | 43,2 m <sup>2</sup> |
| 05 | spíž               | 1,8 m <sup>2</sup>  |
| 06 | koupelna           | 4,7 m <sup>2</sup>  |
| 07 | hostinský pokoj    | 10,5 m <sup>2</sup> |
| 08 | garáž              | 21,7 m <sup>2</sup> |

### PATRO

|    |          |                     |
|----|----------|---------------------|
| 11 | hala     | 5,0 m <sup>2</sup>  |
| 12 | pracovna | 5,7 m <sup>2</sup>  |
| 13 | koupelna | 7,7 m <sup>2</sup>  |
| 14 | pokoj    | 12,8 m <sup>2</sup> |
| 15 | ložnice  | 15,9 m <sup>2</sup> |
| 16 | pokoj    | 15,7 m <sup>2</sup> |
| 17 | komora   | 6,2 m <sup>2</sup>  |

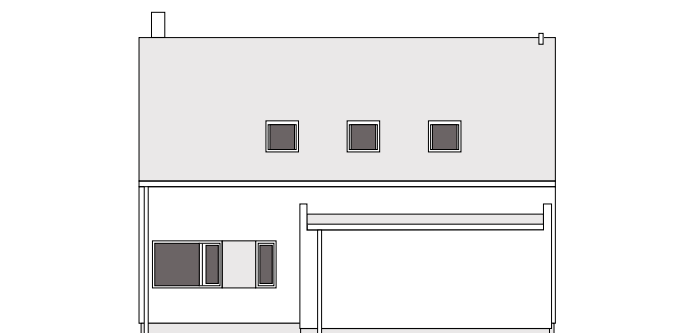
### Užitná plocha

|                      |                            |
|----------------------|----------------------------|
| <b>Užitná plocha</b> | <b>149,1 m<sup>2</sup></b> |
| Zastavěná plocha     | 132,5 m <sup>2</sup>       |
| Půdorysné rozměry    | 10,9 x 14,2 m              |

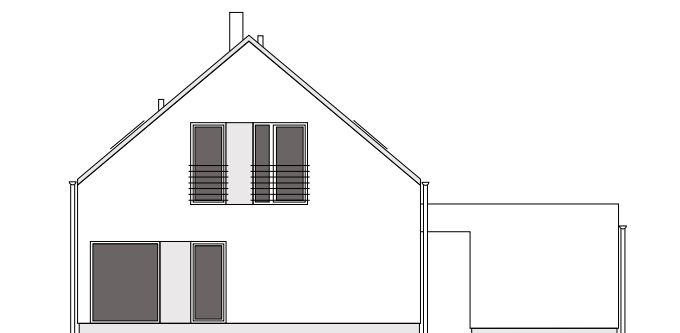


# VEXTA 149G

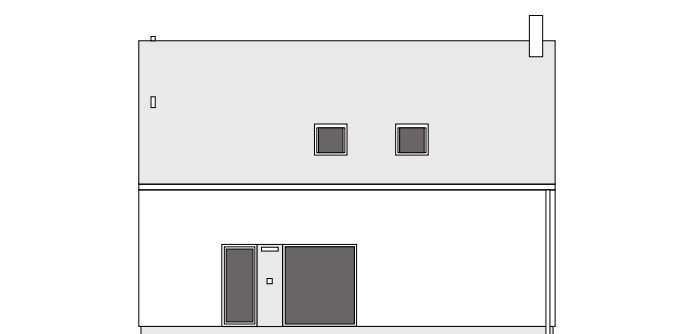
PATROVÝ DŮM | 5+kk



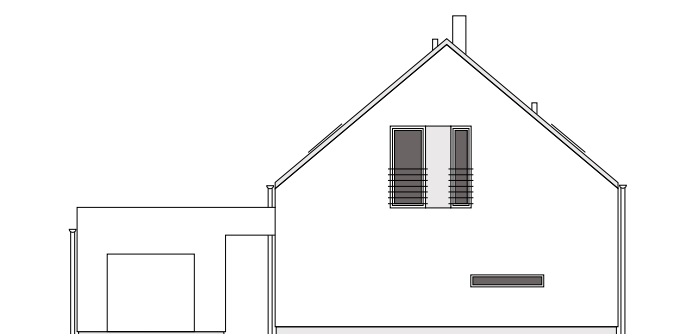
POHLED P1



POHLED P2



POHLED P3



POHLED P4

